

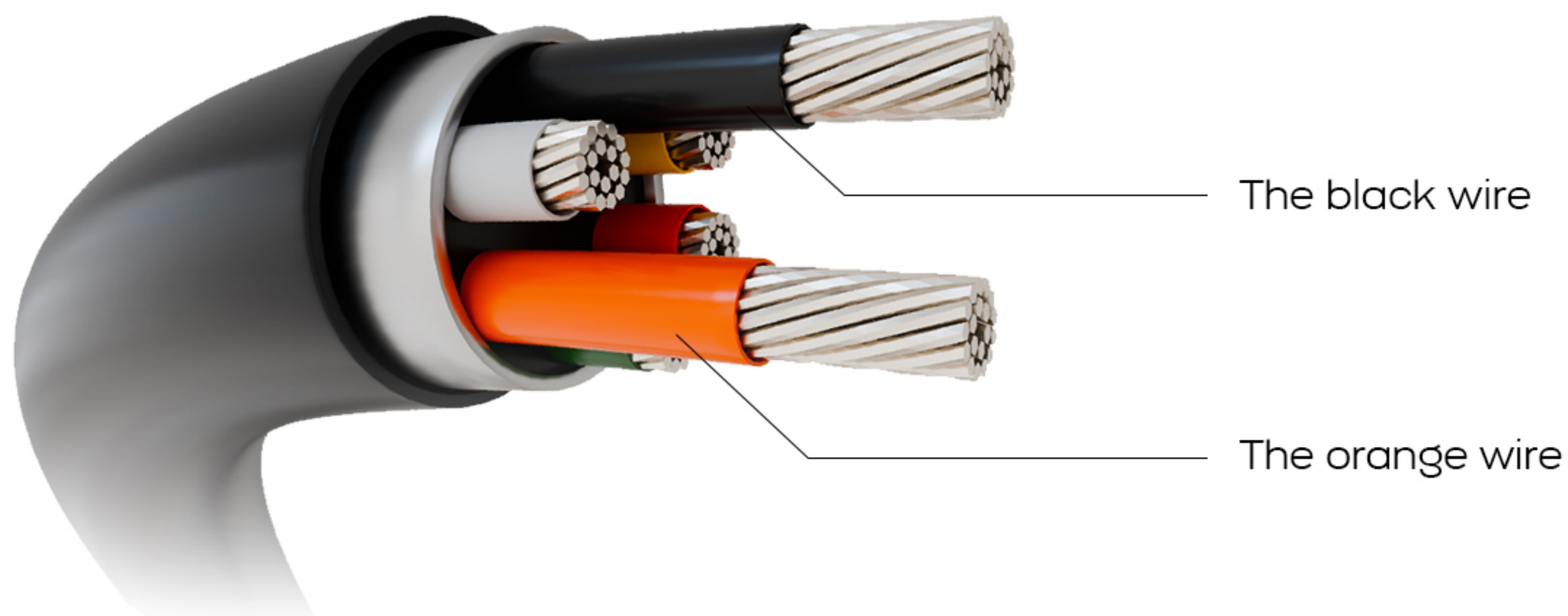


UPPER COMPUTER SOFTWARE UPGRADE PROCEDURE

NOTICE >

Prior to performing the upgrade, please ensure that each unit is upgraded individually and that all parallel communication connections are disconnected. Attempting to upgrade units in parallel may result in upgrade failure.





STEP.1 >

Cut off one end of the communication cable to expose the internal communication wires.

Strip the orange and black communication wires to expose the copper cores.

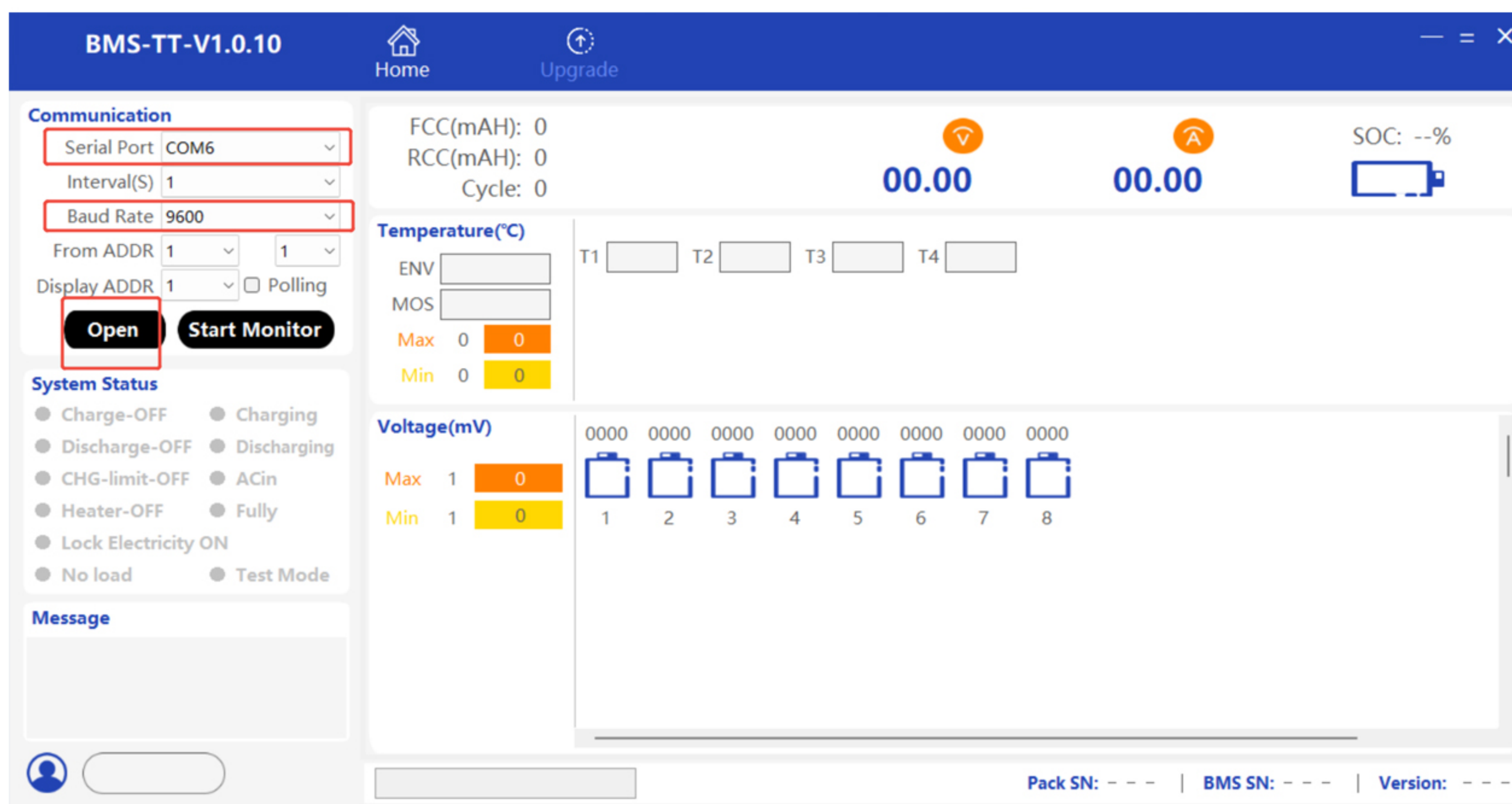


STEP.2 >

Use an RS485-to-USB communication tool

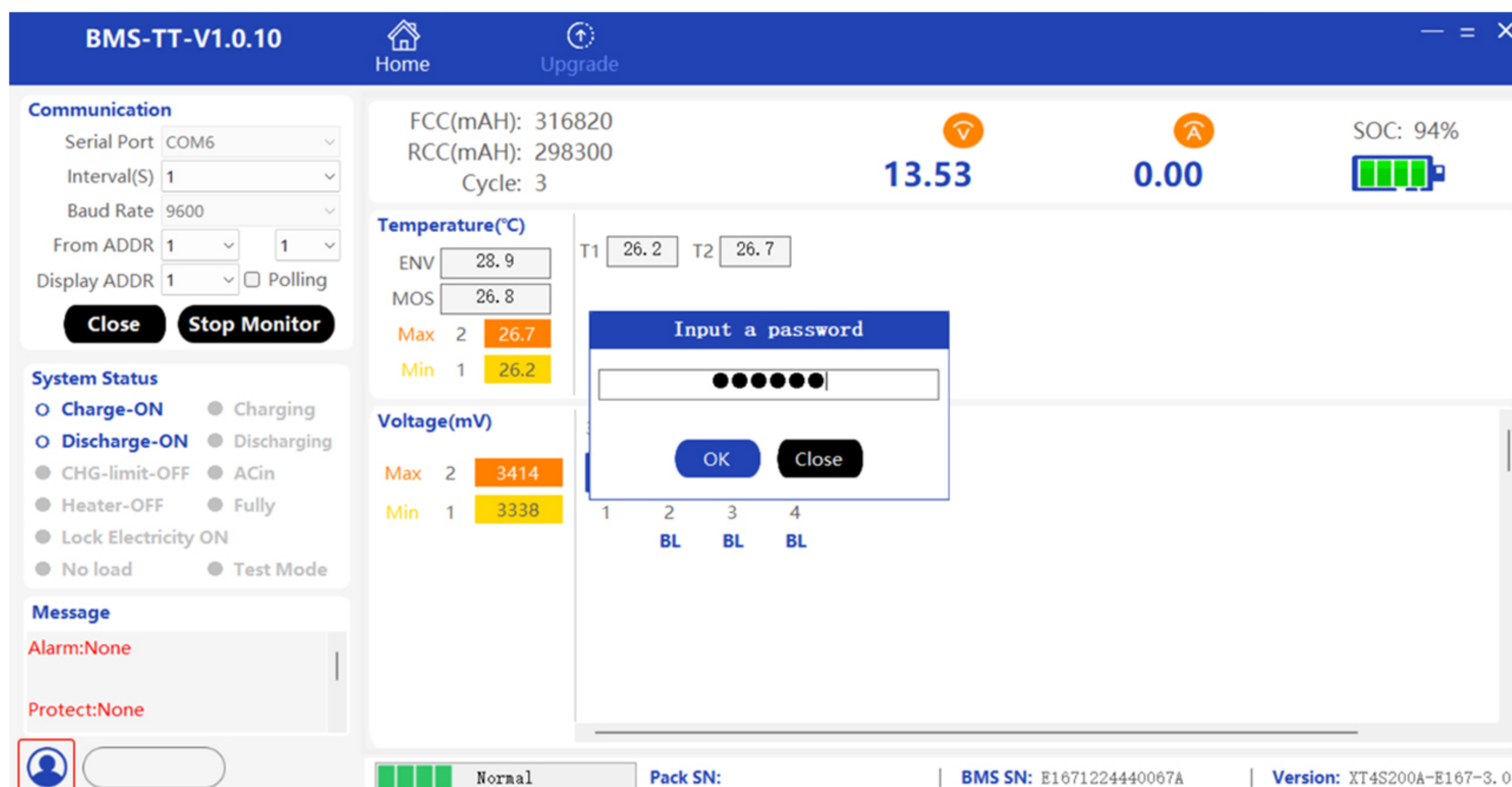
— connect **the orange wire to RS485-A** and **the black wire to RS485-B**.

Complete the tool assembly.



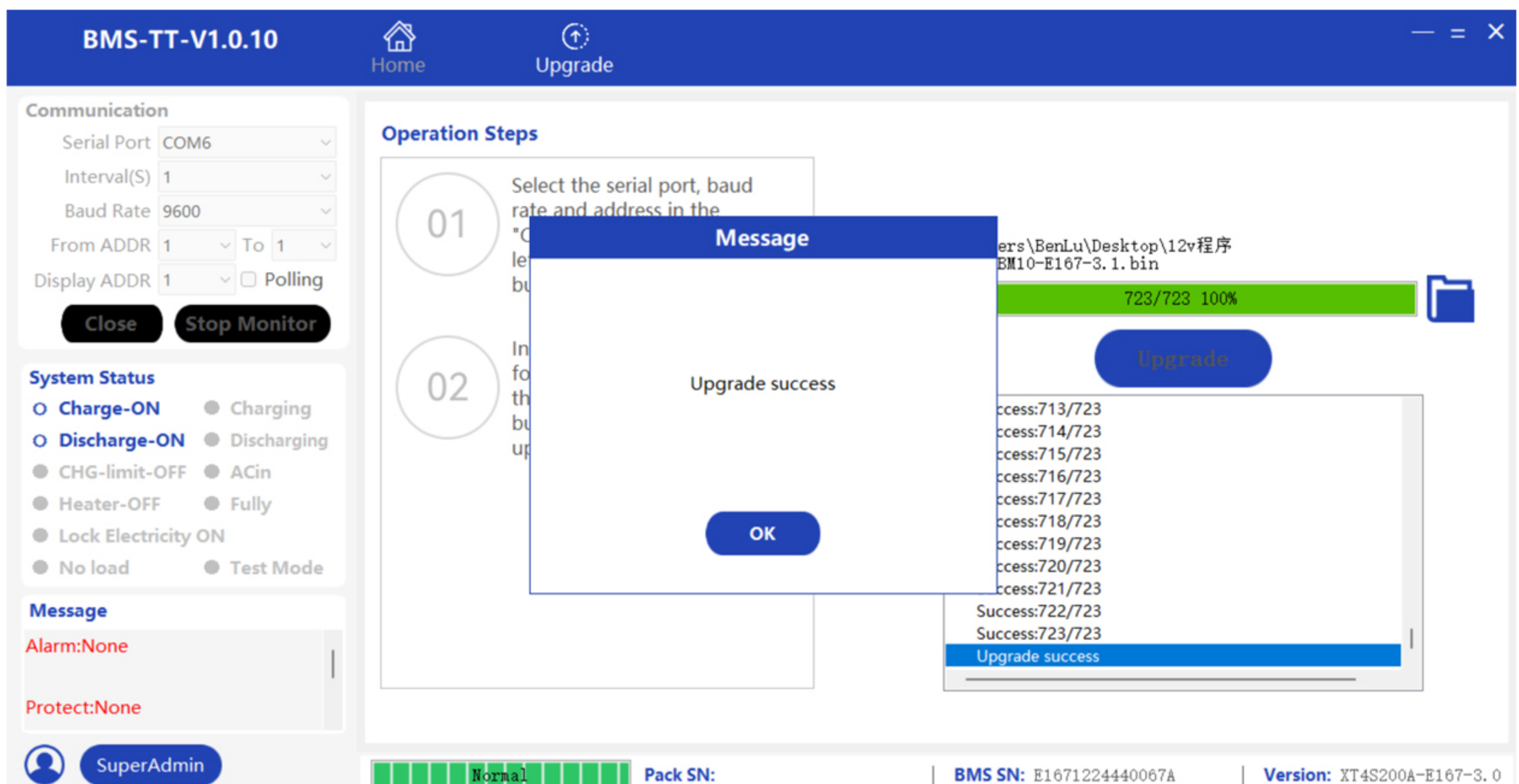
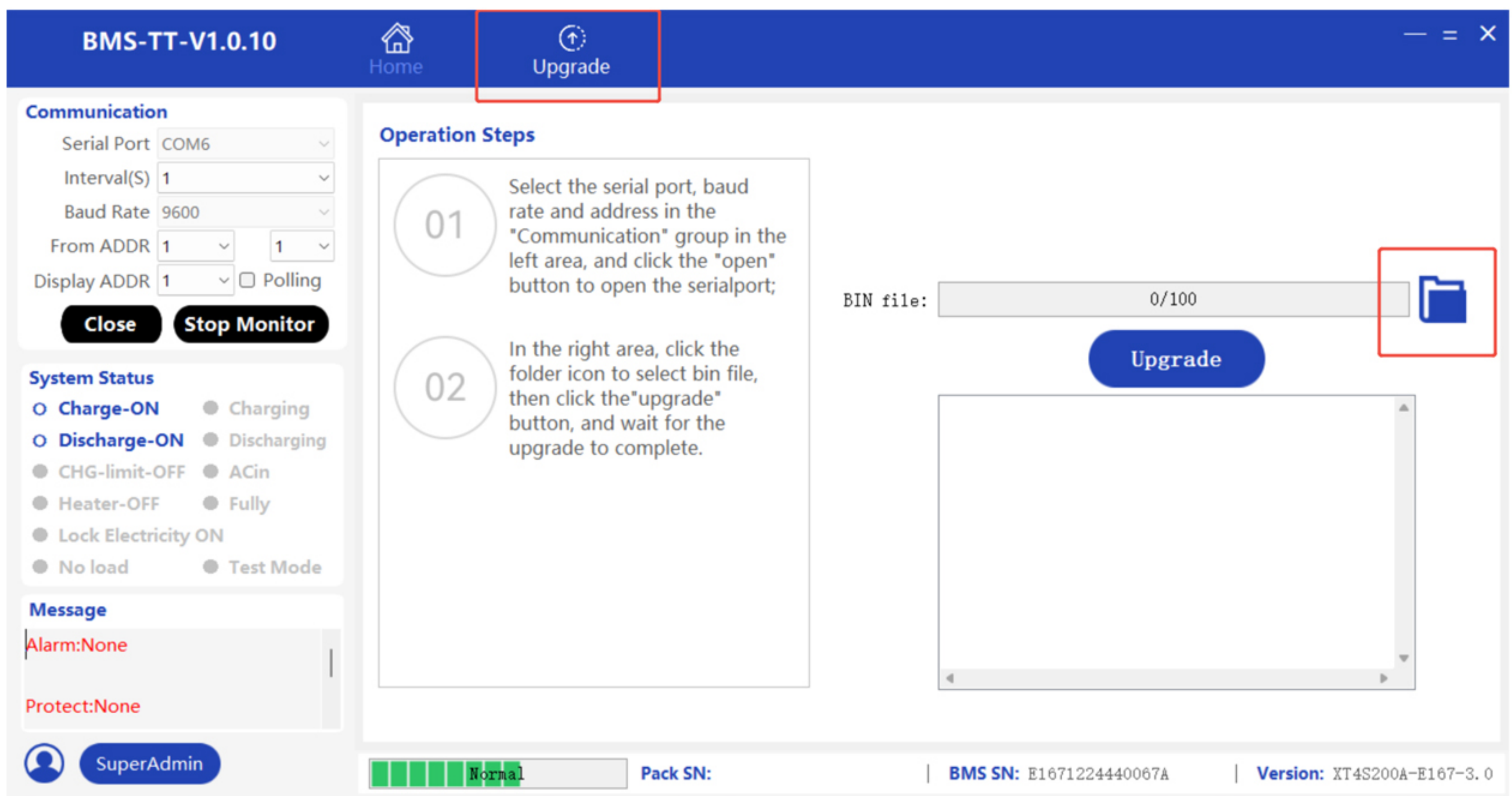
STEP.3 >

Connect the tool between the battery's communication port and your computer. Open the upper computer software, select the correct COM port and set the Baud Rate to 9600. Click "Open" to establish successful communication.



STEP.4 >

Click the portrait icon in the lower left corner and enter the password 123345 to obtain upgrade permission.



STEP.5

Once in the upgrade interface, select the upgrade package and wait for the upgrade to complete.